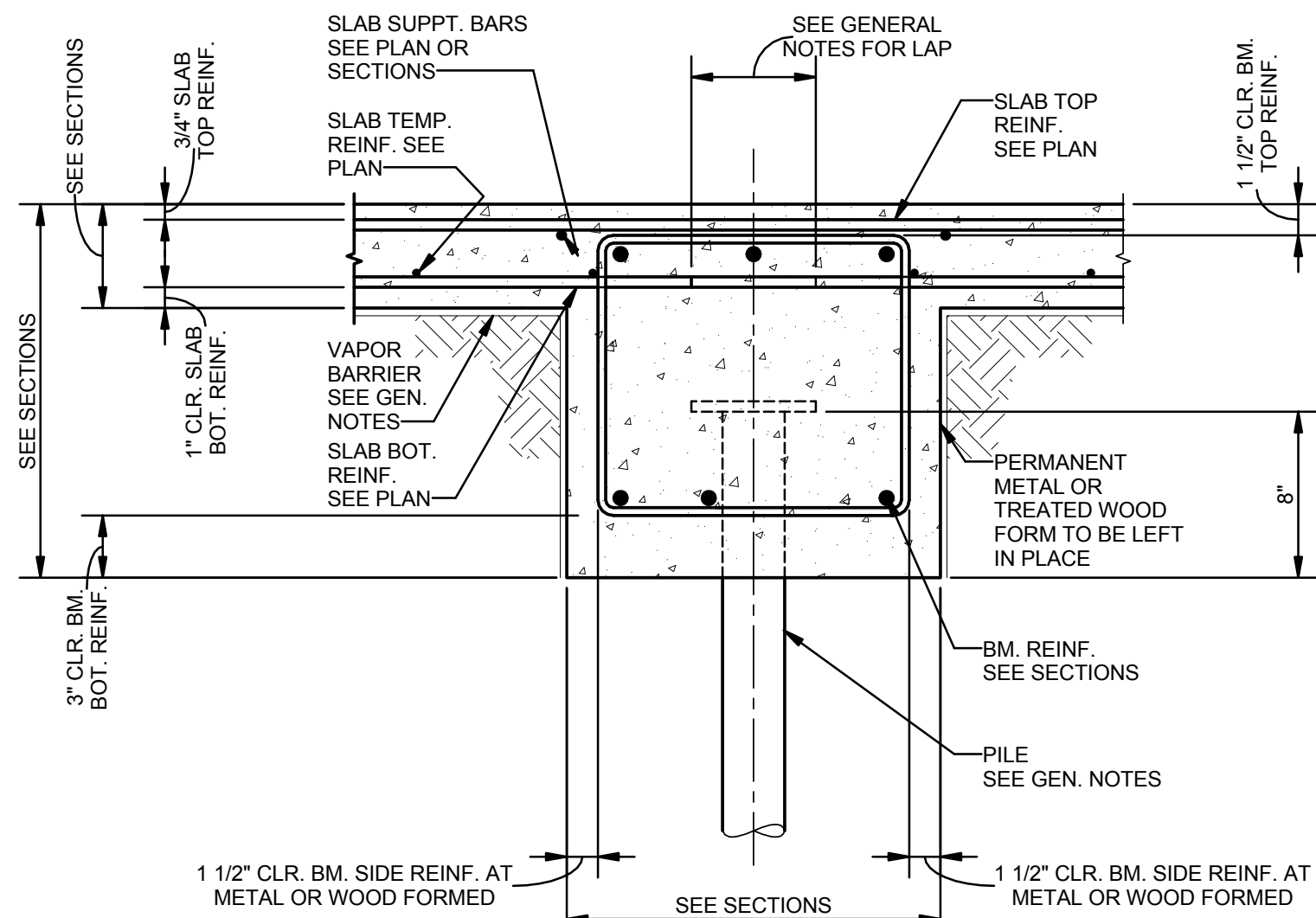


- NOTES:
1. DETAIL SHOWN IS TO ILLUSTRATE REINFORCEMENT PLACEMENT AND OTHER BEAM DETAILS.
 2. SEE PLANS, SCHEDULES, DETAILS, AND SECTIONS FOR DIMENSIONS, ELEVATIONS, AND REINFORCING SIZES AND QUANTITIES.

1 DETAIL-TYPICAL EXTERIOR
1ST FLOOR CONCRETE BEAM

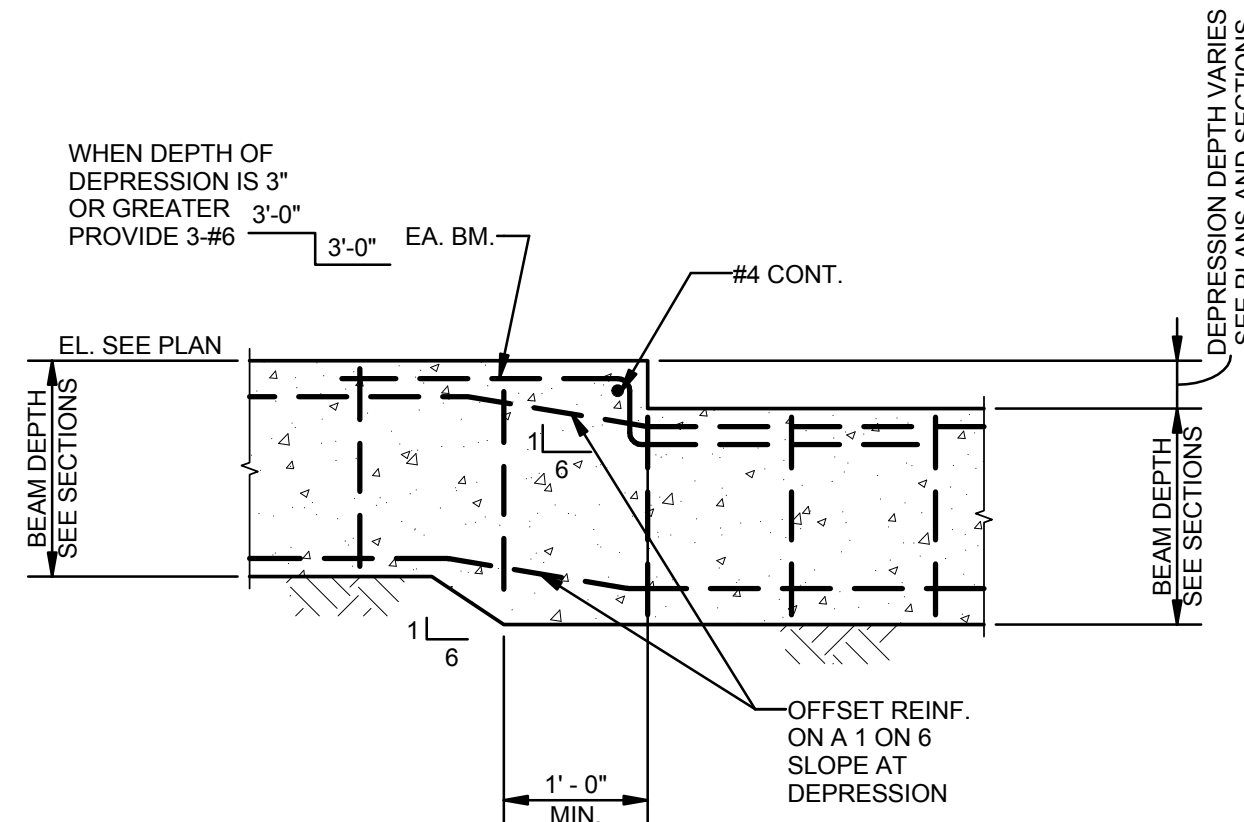
S002 1 1/2" = 1'-0"



- NOTES:
1. DETAIL SHOWN IS TO ILLUSTRATE REINFORCEMENT PLACEMENT AND OTHER BEAM DETAILS.
 2. SEE PLANS, SCHEDULES, DETAILS, AND SECTIONS FOR DIMENSIONS, ELEVATIONS, AND REINFORCING SIZES AND QUANTITIES.

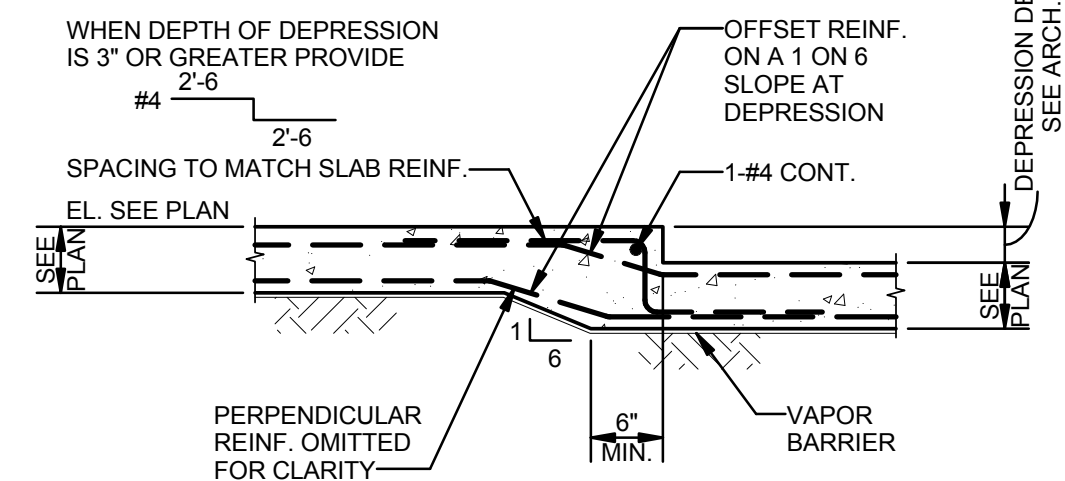
2 DETAIL-TYPICAL INTERIOR
1ST FLOOR CONCRETE BEAM

S002 1 1/2" = 1'-0"



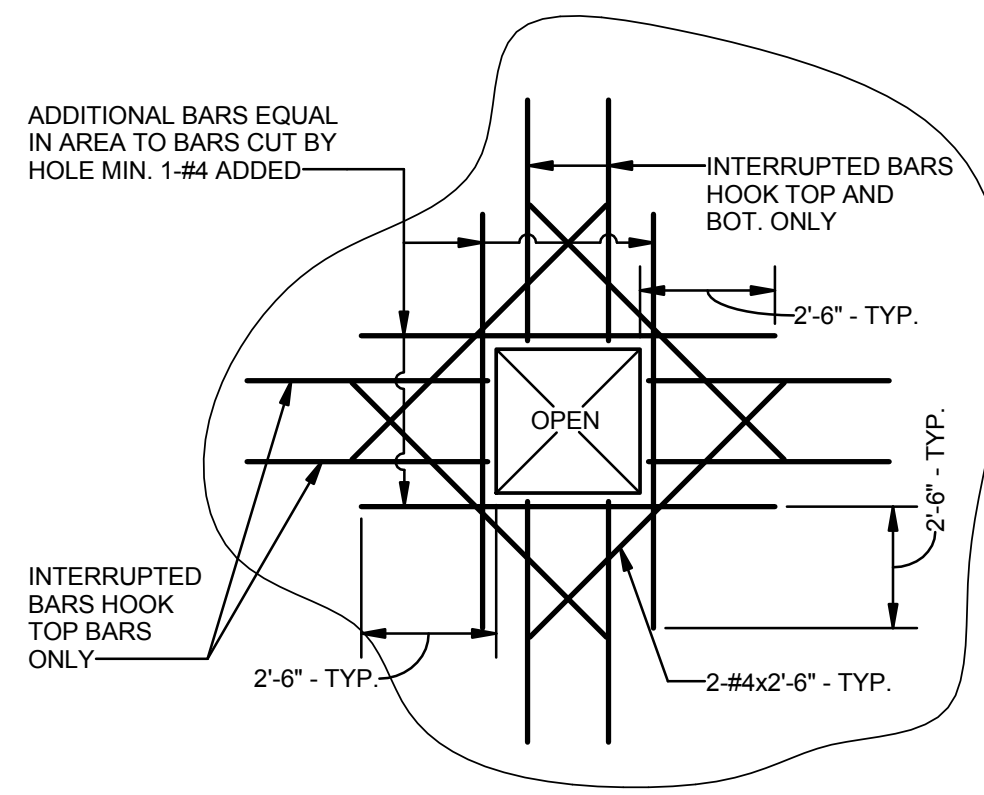
3 DETAIL-CONCRETE BEAM
DEPRESSION

S002 3/4" = 1'-0"



4 DETAIL-TYPICAL SLAB
DEPRESSION

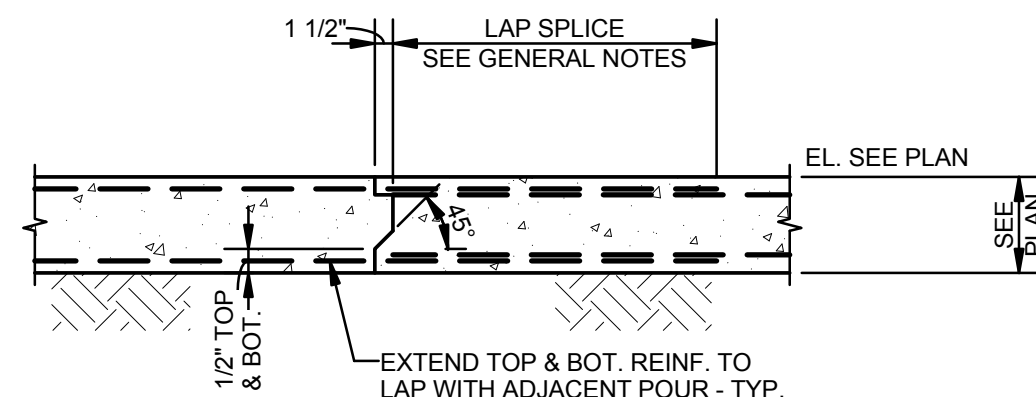
S002 3/4" = 1'-0"



- NOTES:
1. OMIT ADDED BARS FOR HOLES 10" OR LESS AND RUN NORMAL REINFORCING BY SIDE OF HOLE.
 2. WHERE HOLES ARE NEAR OR AGAINST BEAMS OR COLUMNS AND ADDED REINFORCING CANNOT BE EXTENDED AS SHOWN, HOOK AFFECTED END.
 3. LOCATIONS OF ALL OPENINGS SHALL BE AS SHOWN ON ARCH. DWGS.
 4. COLUMN BLOCKOUTS TO BE NO LARGER THAN 2" ALL AROUND BASE PLATE.

5 DETAIL-TYPICAL SLAB
PENETRATION & COLUMN
BLOCKOUT

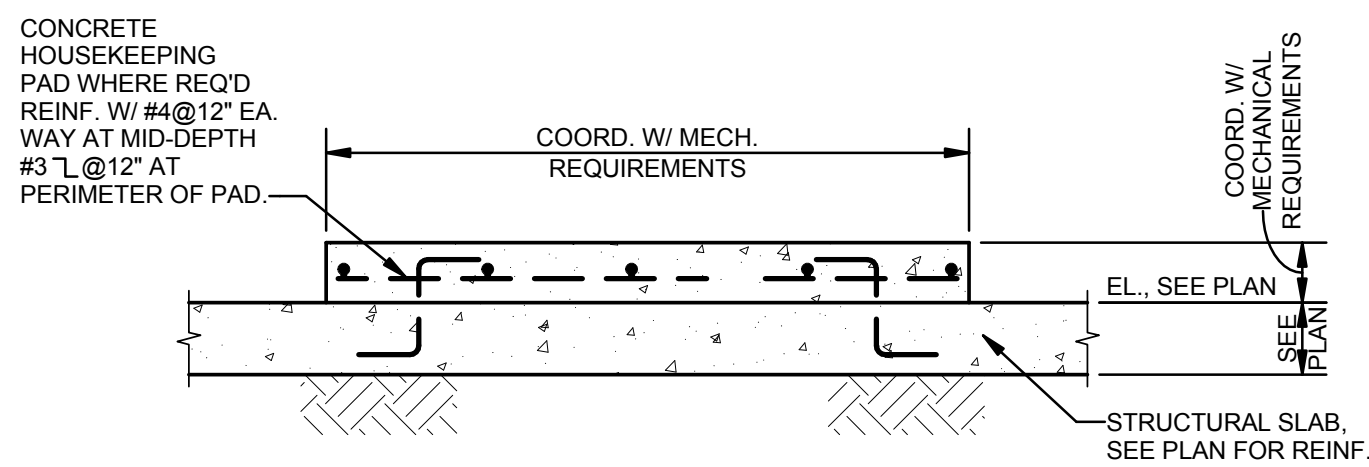
S002 3/4" = 1'-0"



- NOTES:
1. LOCATIONS OF CONSTRUCTION JOINTS TO BE APPROVED BY ENGINEER.
 2. REINFORCING IN OPPOSITE DIRECTION NOT SHOWN.

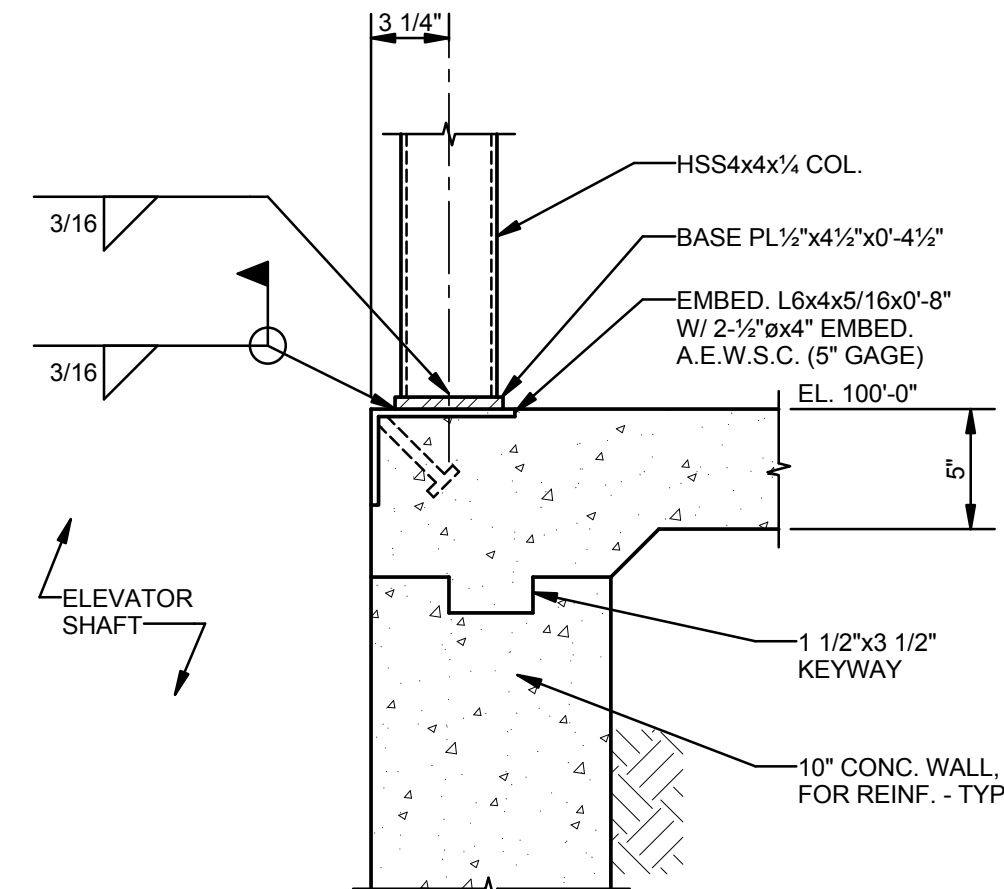
6 DETAIL-TYPICAL FLOOR SLAB
CONSTRUCTION JOINT

S002 3/4" = 1'-0"



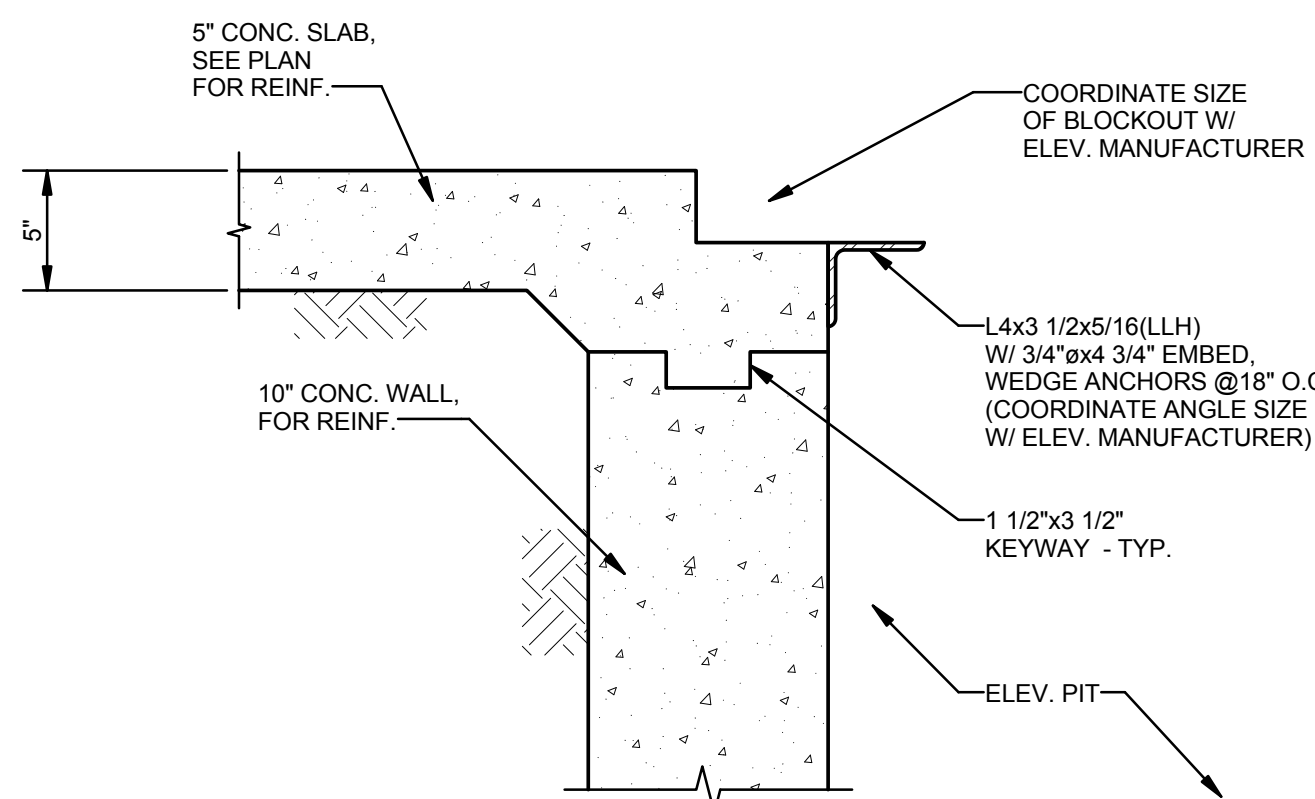
7 DETAIL-HOUSEKEEPING PAD

S002 3/4" = 1'-0"



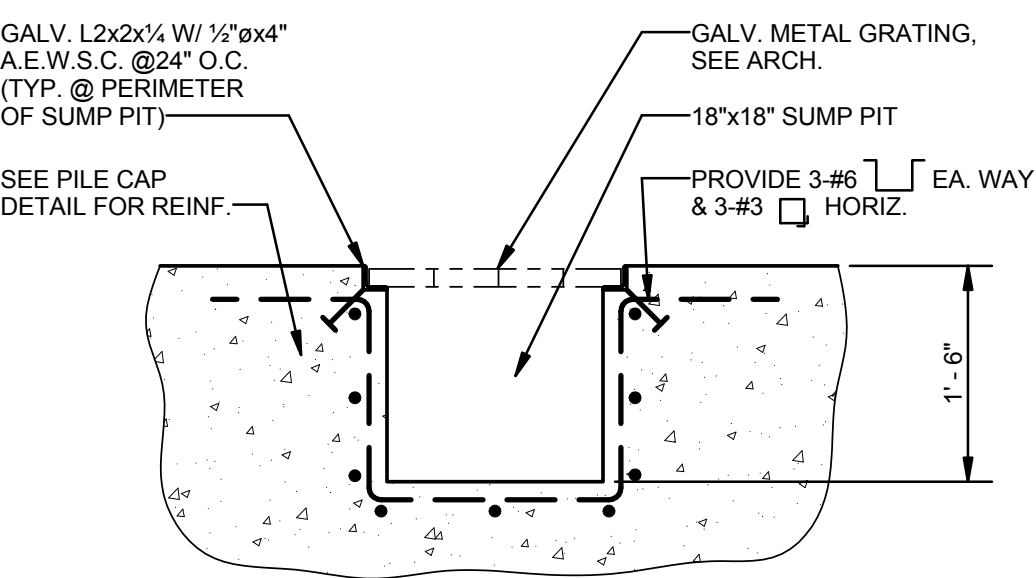
8 SECTION

S002 1 1/2" = 1'-0"



9 DETAIL-TYPICAL ELEVATOR SILL

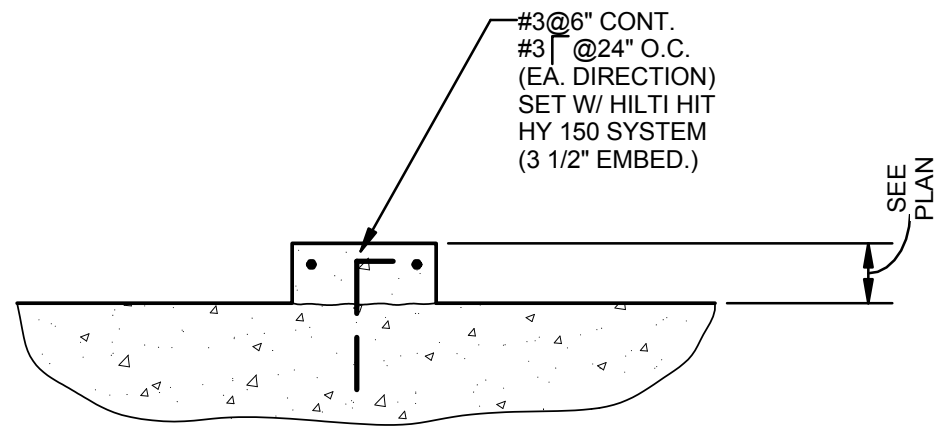
S002 1 1/2" = 1'-0"



- PLAN NOTES: UNLESS NOTED OTHERWISE:
1. PLACE TWO TOP BARS EACH SIDE OF SUMP PIT, EACH DIRECTION.

10 DETAIL-TYPICAL SUMP PIT

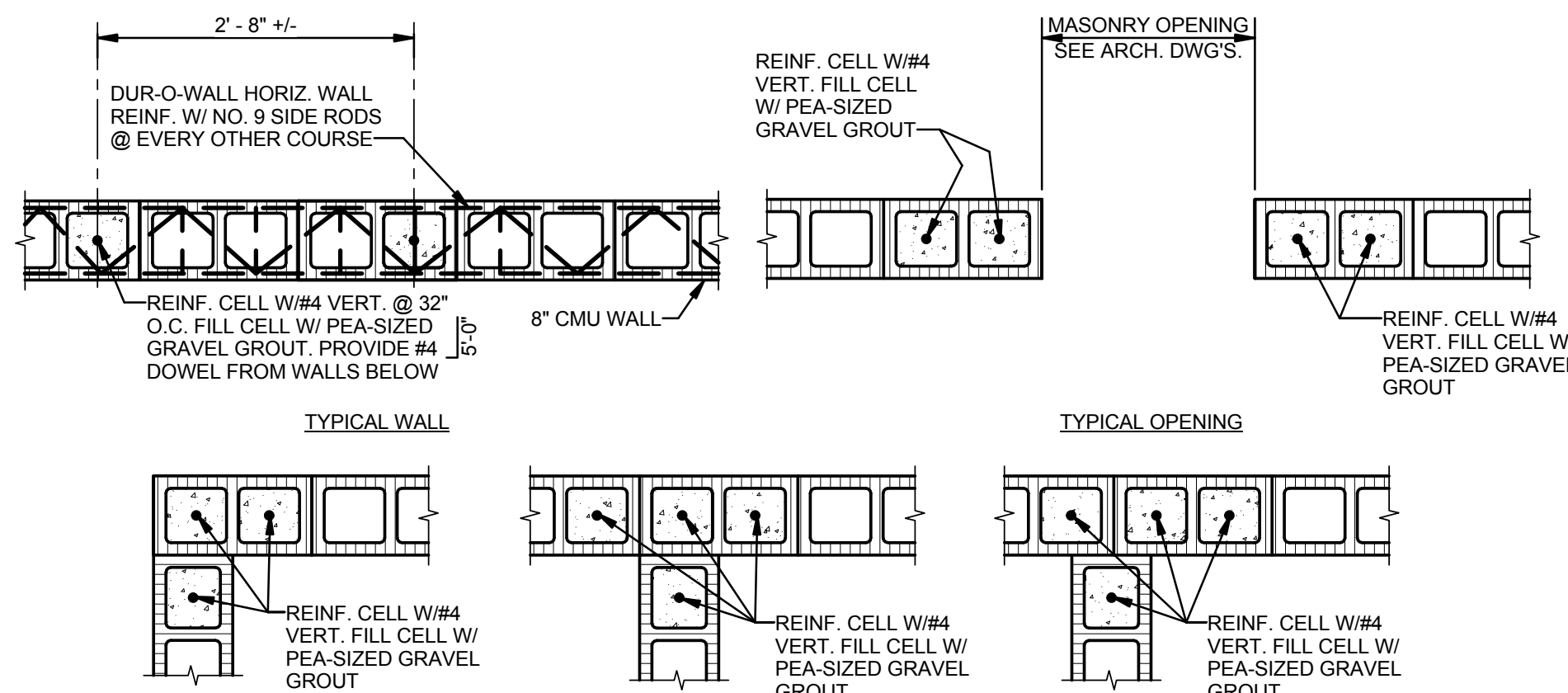
S002 3/4" = 1'-0"



- NOTE: UNLESS NOTED OTHERWISE:
1. ALL CONCRETE TOPPING SLAB CONCRETE SHALL CONTAIN INTEGRAL POLYPROPYLENE FIBER MESH REINFORCING. USE 112 LBS. OF REINFORCING PER CUBIC YARD OF CONCRETE.

11 DETAIL-TYPICAL CURB

S002 1 1/2" = 1'-0"



12 DETAIL-TYPICAL 8" CMU WALL
REINFORCEMENT

S002 3/4" = 1'-0"



MORPHY
MAKOFSKY
INCORPORATED
CONSULTING ENGINEERS
(504) 488-1317
JOB NO. 15157

HARRY
BAKER
SMITH
HB SA II
ARCHITECTS II
P L L C
189 Maple Ridge Drive Metairie, LA 70001
(504) 885-4477
central@hbsaii.com hbsaii.com
SINCE 1961

BROADMOOR
DESIGN-BUILD CONTRACTOR
BROADMOOR, LLC
2740 NORTH ARBOULET ROAD, METAIRIE, LA 70002
T. 504.885.5400 F. 504.885.6955
broadmoorllc.com

WAX MUSEUM CONDOS
917 CONTI STREET
NEW ORLEANS, LA.

THESE PLANS AND SPECIFICATIONS HAVE BEEN PREPARED BY ME OR UNDER MY CLOSE PERSONAL SUPERVISION AND TO THE BEST OF MY KNOWLEDGE AND BELIEF THEY COMPLY WITH ALL CITY, STATE AND FEDERAL REQUIREMENTS, AND I AM NOT PROVIDING CONTRACT ADMINISTRATION.

CERTIFIED CORRECT

THIS DRAWING IS CONFIDENTIAL AND NOT BE LOANED, REPRODUCED, COPIED, EITHER WHOLLY OR IN PART, OR MADE PUBLIC IN ANY MANNER WITHOUT THE WRITTEN CONSENT OF HBSA II ARCHITECTS. A PROFESSIONAL L.L.C. ALL RIGHTS OF DESIGN OR INVENTION ARE RESERVED AND WILL REMAIN THE SOLE PROPERTY OF HBSA II ARCHITECTS A PROFESSIONAL L.L.C.

REVISION HISTORY					
NO.	DATE	DESCRIPTION	DESIGNED BY	DRAWN BY	CHECKED BY
1	06/20/16	SCHEMATIC DESIGN			
2	07/14/16	DESIGN DEVELOPMENT			
3	08/26/16	FOUNDATION PERMIT SET			
4	09/16/16	PROGRESS SET			
5	09/27/16	PERMIT SET			

TYPICAL DETAILS

PROJECT#: 1435
PHASE: DD
DRAFTER: HSB
CHECKER: HSB
SCALE: AS NOTED
ISSUED: 08-26-16

SHEET#:

S002